



Schroder Tokyo A Acc

What is the Fund's objective?

The fund's investment objective is to achieve capital appreciation through participation in the growth of the Japanese economy. Investment will be based primarily on Japan's economic strengths, such as its manufacturing industry (in particular on those parts of it that are demonstrating an ability to exploit newly emerging technology) and on sectors benefiting from structural change in the economy. Investment will be in directly held transferable securities. The fund may also invest in collective investment schemes, warrants and money market instruments.

Cumulative Performance



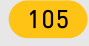


	3m	6m	1yr	3yrs	5yrs
 Schroder Tokyo A Acc	+9.5	+11.7	+19.5	+35.2	+45.2
 IA Japan	+8.0	+10.3	+15.9	+36.0	+35.4
Rank within sector	15 / 64	21 / 64	16 / 63	29 / 59	13 / 56
Quartile	1	2	1	2	1

Fund Information

Sector	IA Japan
Asset Class	Equity
Launch Date	01-Mar-1989
Fund Size	£1,752.8m / \$2,668.6m (06-Mar-2015)
Fund Manager	Andrew Rose

How does FE rate this fund?

FE Crown Rating	
AFI	  
Risk Score	

Other ratings

MStar Rating	 
--------------	---

Investment Details

Initial Charge	0.00%
Annual Charges	1.50%
Note to charges	n/a
Minimum Initial Investment	£ 1,000
Minimum Additional Investment	£ 500
Dividend Policy	Mar 01 (Final)

Prices

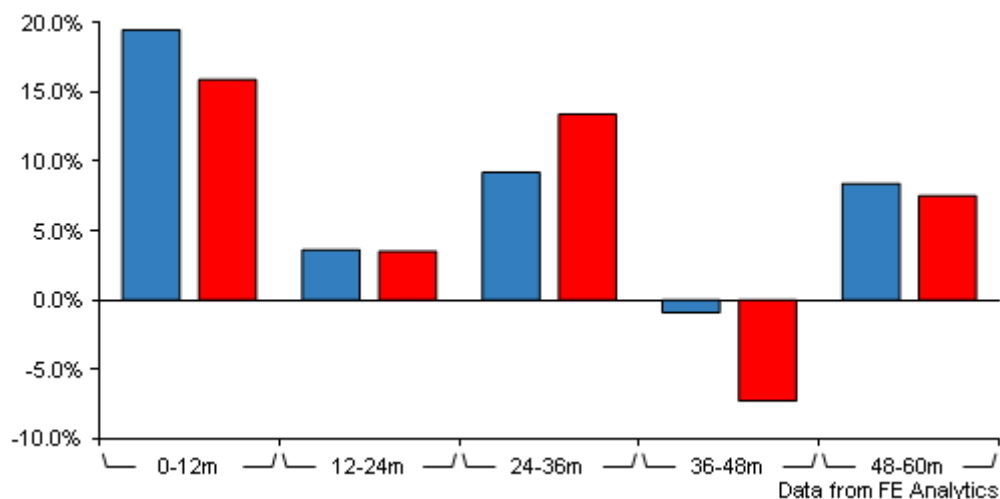
Unit Type	ACC
Bid	254.50(GBX)
Offer	255.40(GBX)
Price Date	06-Mar-2015
Yield	0.08

Codes

Citicode	UM18
SEDOL	0765064
ISIN	GB0007650640

Schroder Tokyo A Acc

Discrete Performance

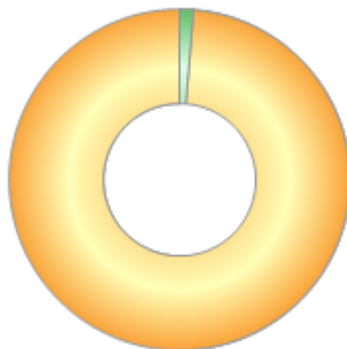


	0-12m	12m-24m	24m-36m	36m-48m	48m-60m
■ Schroder Tokyo A Acc	+19.5	+3.6	+9.2	-0.9	+8.4
■ IA Japan	+15.9	+3.5	+13.4	-7.3	+7.5
Rank within sector	16 / 63	27 / 60	44 / 59	6 / 57	21 / 56
Quartile	1	2	3	1	2

Price total return performance figures are calculated on a bid price to bid price basis (mid to mid for OEICs) with net income (dividends) reinvested. Performance figures are shown in Sterling unless otherwise specified.

Asset Allocation (30 Jan 2015)

Rank	Asset Classes	%
1	Japanese Equities	98.83
2	Cash	1.34
3	Derivatives	-0.17



Contact Details

Address 31 Gresham Street,
London, EC2V 7QA

Telephone numbers 0800 718 788
(Dealing)
020 7658 6965 (Fax Number)
0800 718 777 (Main Number)

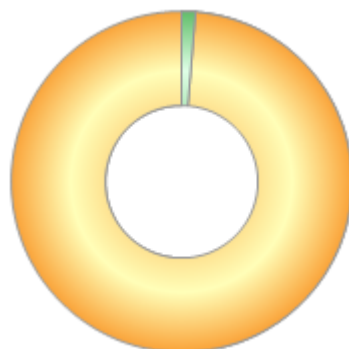
Website www.schroders.co.uk

Email investorservices@schroders.com

Schroder Tokyo A Acc

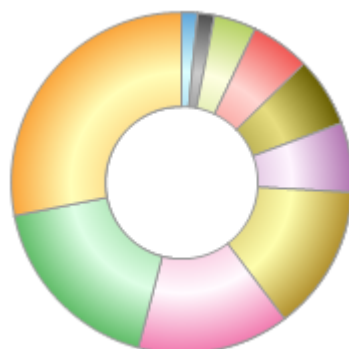
Regional Breakdown (30 Jan 2015)

Rank	Regions	%
1	Japan	98.83
2	Cash	1.34
3	Derivatives	-0.17



Sector Breakdown (30 Jan 2015)

Rank	Sectors	%
1	Industrials	28.13
2	Consumer Goods	17.82
3	Financials	14.36
4	Consumer Services	13.80
5	Basic Materials	6.63
6	Technology	6.55
7	Telecommunications	5.57
8	Health Care	4.03
9	Oil & Gas	1.64
10	Others	1.47



Top Holdings (30 Jan 2015)

Rank	Largest Holdings	%
1	TOYOTA MOTOR CORP	5.05
2	BRIDGESTONE CORP	3.56
3	KDDI CORPORATION	3.28
4	EAST JAPAN RAILWAY CO	2.88
5	SOMPO JAPAN NIPPONKOA HOLDINGS INC	2.81
6	MITSUI & CO	2.76
7	SK KAKEN CO	2.58
8	SUMITOMO MITSUI FINANCIAL GROUP INC	2.56
9	HI-LEX CORP	2.50
10	TDK CORP	2.40